

CBRO INCORPORATION through **Advanced Material Technologies Pty Ltd** is a quality recognized company is active in Manufacturing Consulting & Supplying of high quality **Heat Exchangers, Spiral Wound Finned tubes, Integral Finned tubes, Process Gas Cooler, Air Heater, Air Cooled Heat Exchangers & varieties of Shell & Tube Heat Exchangers., Dehumidifier, Industrial Blowers, Air Handling Systems (AHU) Pressure Vessels, Reactors & Processing Systems & Other Heat Transfer equipments**, Our brand chooses to stand firm in the Indian & International market with promise, standard & guarantee.

WE established in 1994 by two technocrats having more than 20 years of experience in **Stainless Steel Fabrication & Thermal Heat Transfer Systems.**

Our team result oriented Qualified Techno-Commercial Staff having spirit of team work, enthusiasm and a passion for excellence to deliver outstanding performance in the field of manufacturing GMP and Non GMP Equipments for Chemical, Pharmaceutical, Paints and Other Process Industries.

WE design and manufacture as per international standard such as ASME / TEMA

Our products can be seen operating in refineries & petrochemical, pharmaceutical, chemical, marine, steel & various process industries.

Our products have exported our products to Australia, New Zealand & Middle East countries, our Indian customers includes giants such as Reliance Industries, BARC, Thermax, ISPAT, Essar steel etc

Our Quality Control facilities include trained personnel and calibrated instruments.

Our products have been approved by reputed international bodies such as **TUV, EIL (for IOTL), Bax Counsel, Campro etc.**

HEAT EXCHANGERS







• FINNED TUBE HEAT EXCHANGER & SHELL & TUBE , AIR COOLED HEAT EXCHANGERS & GAS PREHEATER & AIR HEATER , • EXPANDED & DOUBLE TUBE SHEET TYPE.

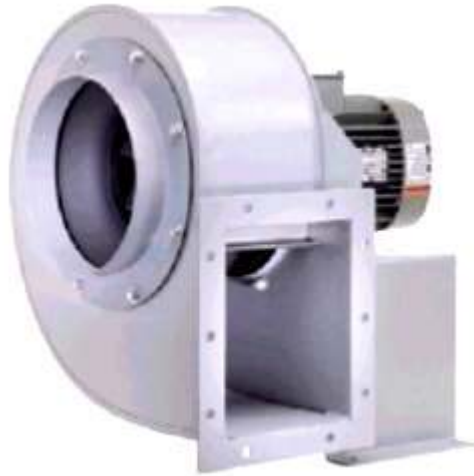
STORAGE TANKS

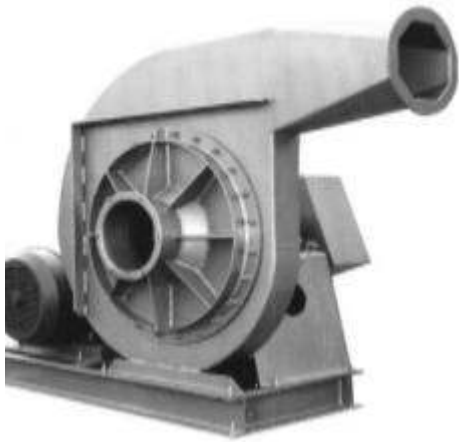


- Capacity : upto 50 KL ,
 - With SS Limped, Insulation & SS Cladding. ,
 - Polished upto 400 Grit Mirror For Food Grade..
-

BLOWERS









- **Centrifugal Fans, High pressure Blower in single & Multi stages, Axial Flow Fan, Centrifugal Backward Curved & Inclined Blower, Radial Tips, ID & FD Fans, Air Handling Unit.**

In-House Facilities

- **Dished End Manufacturing Upto 4 Mtrs. Dia X 25Mm Thick**
- **Tube Sheet Drilling On Hmt 63**
- **Turning Lathe Of 2 Mtrs. Dia Swing X 6 Mtrs. Of Length**
- **40 Ft. Working Height With 20 Tons Eot Cranes**